

KOLESARSKA KONFERENCA 2026

vsi na isti poti



A2PT final conference & 5th Slovene cycling conference

June 3rd, 2026 | Grand hotel Union



REPUBLIKA SLOVENIJA
MINISTRSTVO ZA OKOLJE,
PODNEBJE IN ENERGIJO

Interreg
Danube Region



Co-funded by
the European Union


Active2Public Transport

sptm

SLOVENSKA
PLATFORMA
ZA TRAJNOSTNO
MOBILNOST



Veleposlaništvo
Kraljevine Nizozemske



REPUBLIKA SLOVENIJA
MINISTRSTVO ZA OKOLJE,
PODNEBJE IN ENERGIJO

Interreg
Danube Region



Co-funded by
the European Union

sptm

SLOVENSKA
PLATFORMA
ZA TRAJNOSTNO
MOBILNOST



Veleposlaništvo
Kraljevine Nizozemske



Active2Public Transport

KLESARSKA KONFERENCA 2026

vsi na isti poti

Mobility, Climate and Energy

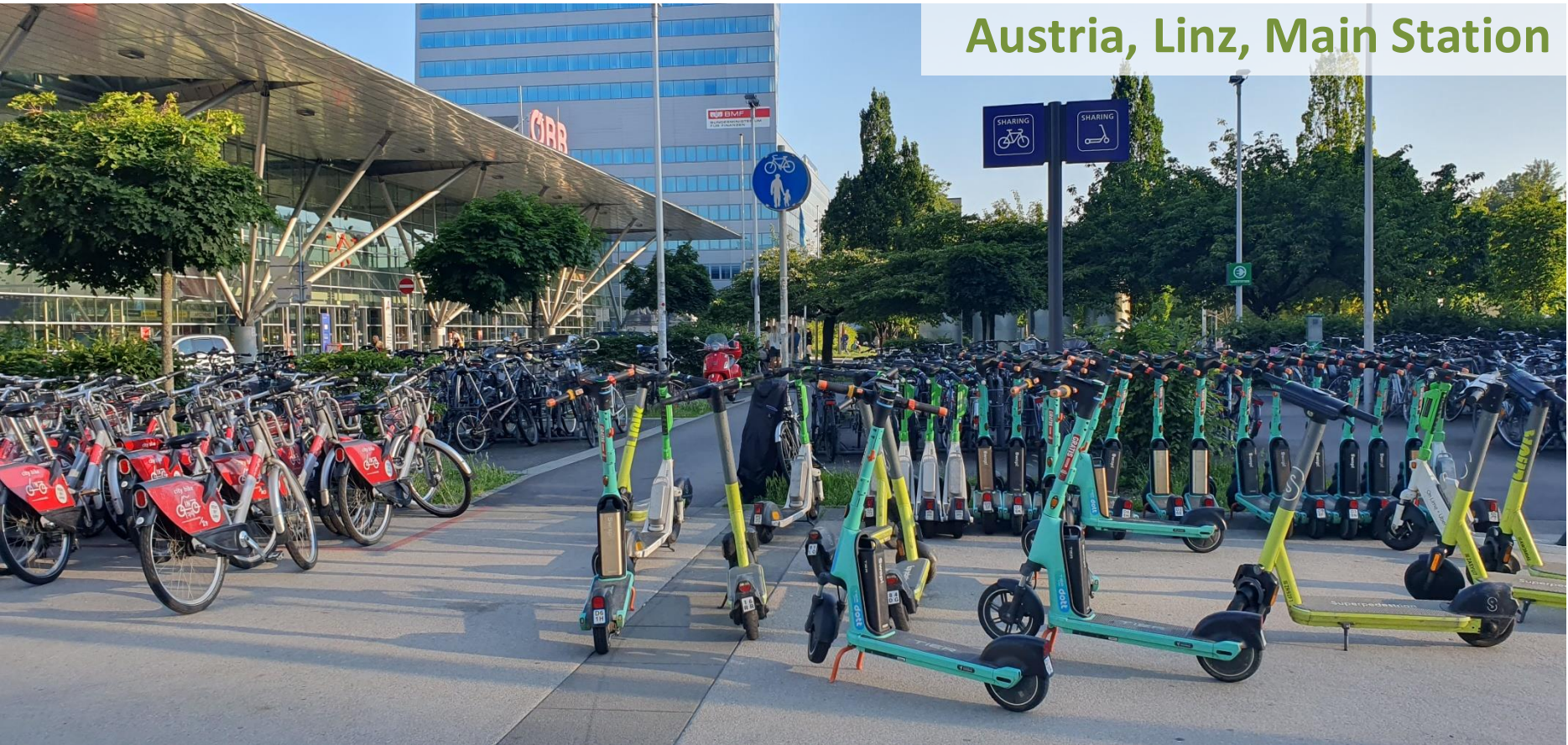
How traffic affects climate quality and energy consumption



Irene Bittner

Österreichische Energieagentur – Austrian Energy Agency

Austria, Linz, Main Station



Active2Public Transport

Multistakeholder-Partnership:
Ministries, Regional Mobility &
Energy Agencies, Public Transport...

Austria	Germany	Serbia
Croatia	Hungary	Slovakia
Czechia	Romania	Slovenia



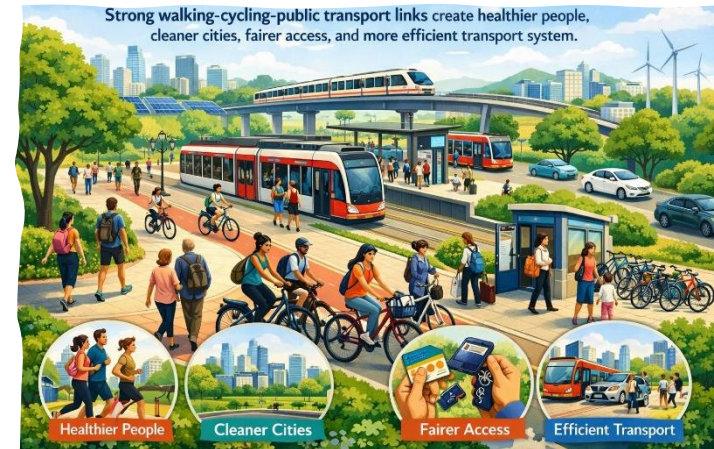
Our Vision

Modal shift towards active & public transport

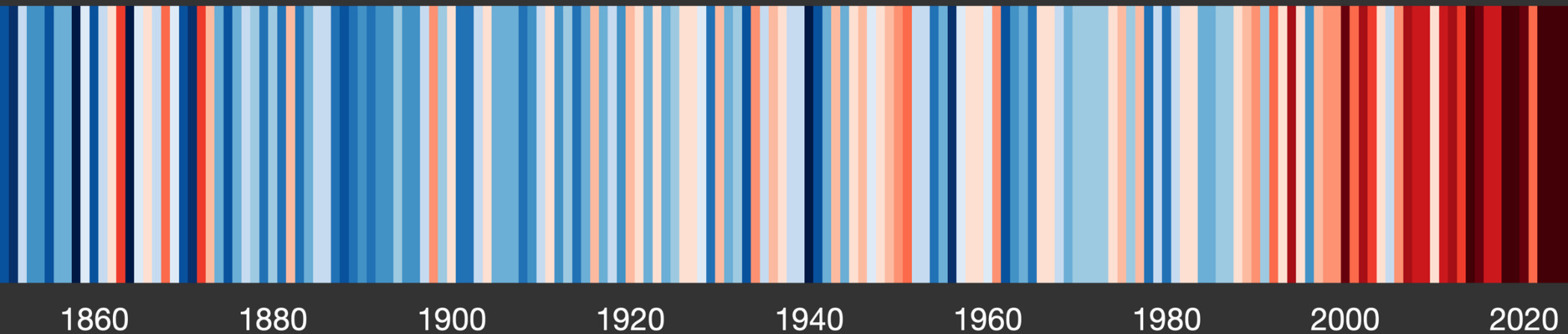
to leverage a...

- seamless,
- efficient, and
- eco-friendly

...transportation ecosystem



Temperature change in Slovenia since 1850



Source: Hawkins, Ed (2026): *#ShowYourStripes*.
National Centre for Atmospheric Science, University of Reading, UK.
Retrieved online on 2026-05-27: <https://showyourstripes.info/europe/slovenia/all>





Source: www.klimaaktiv.at/infografiken (2025)

Greenhouse Effect: How Long We've Known About It

1824, more than 200 years ago, Joseph Fourier discovered the greenhouse effect.

Without the greenhouse effect, the global average temperature would not be 14 °C, but minus 18 °C – a difference of 32 °C.

Charles D. Keeling provided evidence in 1958 of the anthropogenic (human-made) greenhouse effect.



Source: www.klimaaktiv.at/infografiken (2025)


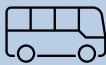

This Is Why Climate Change Leads to More Heavy Rain and Flooding

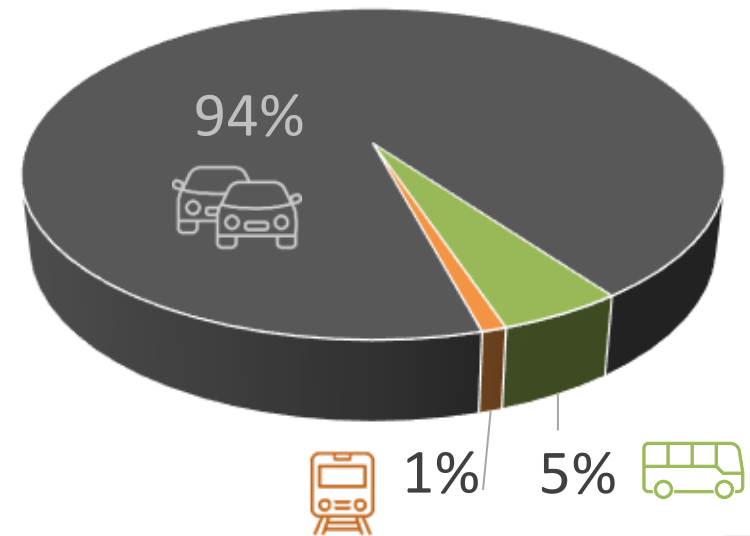
Rising temperatures mean more evaporation of water. With each degree of warmer air, 7% more moisture is stored.

The result: large rain clouds and heavy rainfall and soil that often cannot absorb the precipitation quickly enough or at all. The consequence: flooding, flash floods, and high water levels



Energy consumption of passenger transport in the Danube Region (2022)

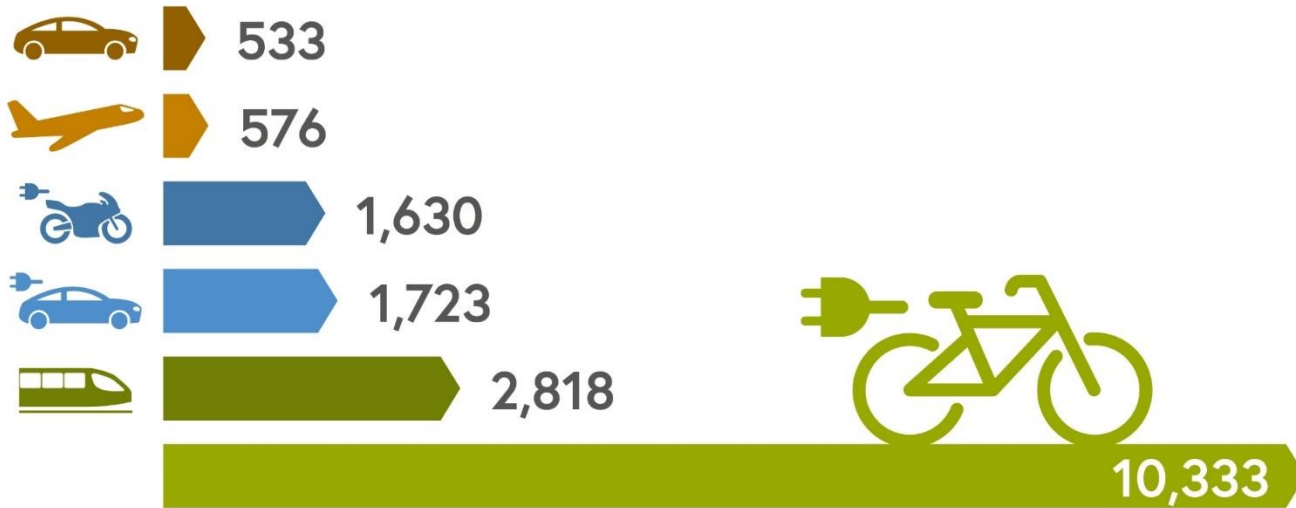
Passenger Transport	Energy Consumption
Inland transport	Petajoule
Road  	2 165 PJ
... Cars	2 059 PJ
... Buses	106 PJ
Railway 	21 PJ



Source: Odysee Mure (2024): Specific energy consumption by transport mode. [online]
www.odyssee-mure.eu/publications/efficiency-by-sector/transport/specific-consumption.html
 [retrieved May 2024] / Note: an assumption was made for the Serbian passenger kilometre of cars



The annual power consumption
of a refrigerator equals ... passenger kilometers



Source: Umweltbundesamt, 310 kWh annual power consumption refrigerator

CO₂-emissions of passenger transport in DR (2022)

Passenger Transport 2022	Net Length		GHG Emissions due to fuel combustion		GHG Emissions per Net Kilometre	
	in kilometre	Relation Rail : Road	in tons of CO ₂ -equivalent	Relation Rail : Road	in tons of CO ₂ -equivalent per kilometre	Relation Rail : Road
Rail	94,107 km	1	1,759,000 tCO ₂ eq	1	19 tCO₂eq/km	1
Road	673,602 km	7.1	145,513,220 tCO ₂ eq	82.7	216 tCO₂eq/km	11.3

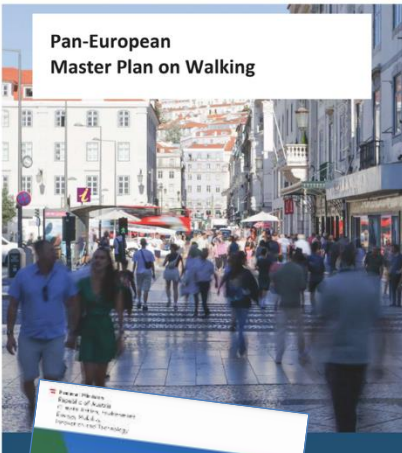
CO2-emissions of passenger transport (2022)

Passenger Transport 2022	Net Length		GHG Emissions due to fuel combustion		GHG Emissions per Net Kilometre	
	in kilometre	Relation Rail : Road	in tons of CO ₂ -equivalent	Relation Rail : Road	in tons of CO ₂ -equivalent per kilometre	Relation Rail : Road
Rail	94,107 km	1	1,759,000 tCO ₂ eq	1	19 tCO₂eq/km	1
Road	673,602 km	7.1	145,513,220 tCO ₂ eq	82.7	216 tCO₂eq/km	11.3

active mobility?
data ???
0 emissions

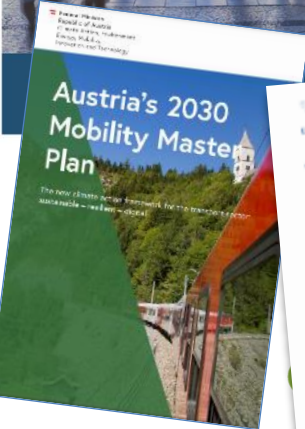
Policies to reduce GHG emissions and energy consumption in the transportation system





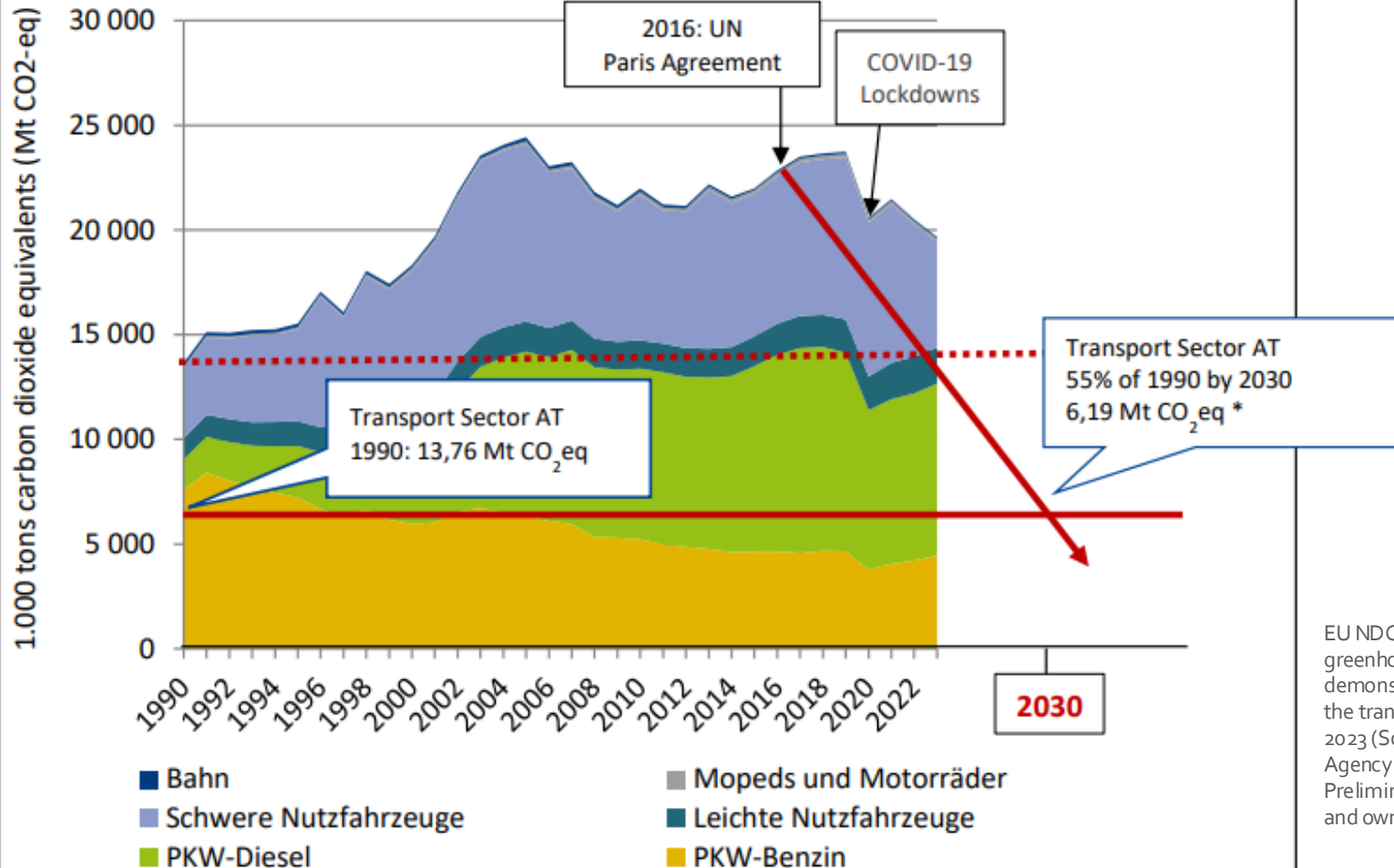
Pan-European
Master Plan on Walking

ADMINISTRATIVE LEVEL	NUMBER OF DOCUMENTS
EU- and transnational	15 documents
NECPs (National, binding)	9 NECPs and 2 updated NECPs reviewed)
National Strategies and Plans	57 documents (reviewed)
National Laws and Regulations	56 documents
TOTAL	139 documents considered / 68 documents reviewed



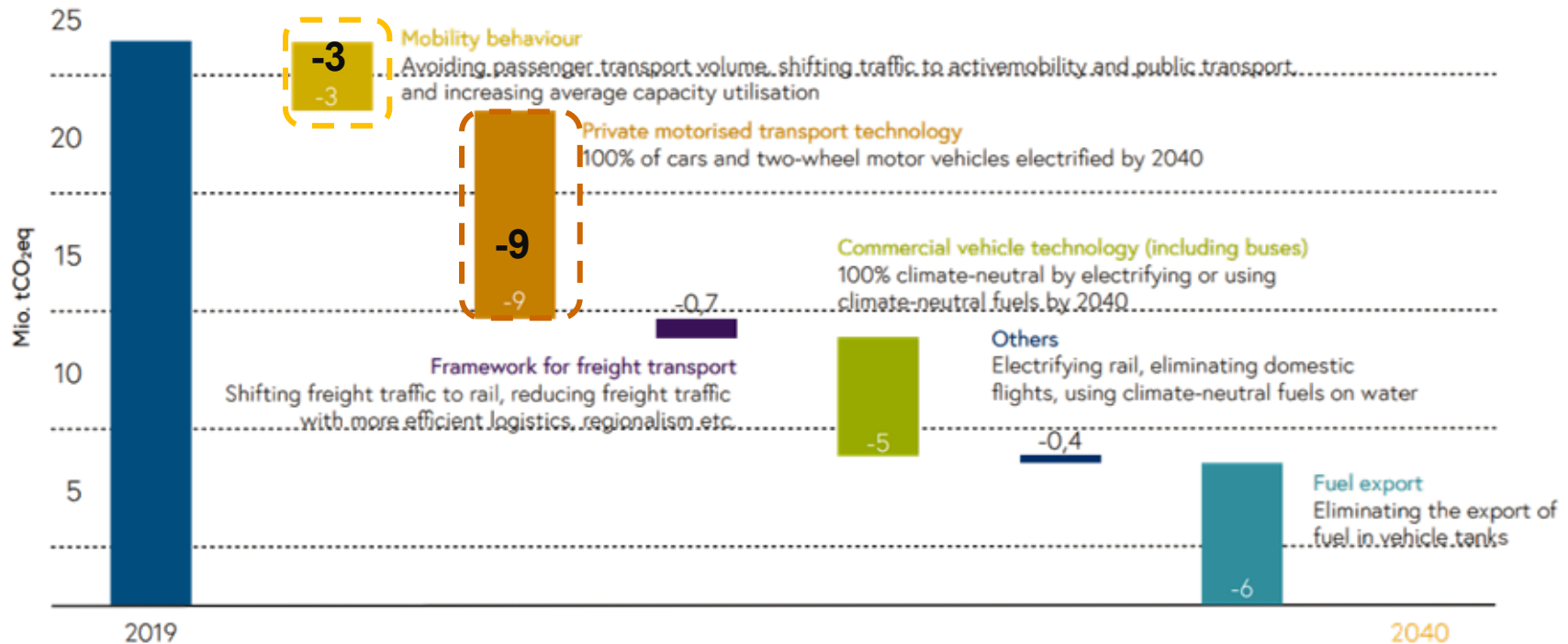
AUSTRIA NDC

GHG emissions of the transport sector in Austria, 1990–2023



EU NDC of 55% reduction in greenhouse gas emission, demonstrated with GHG emissions of the transport sector in Austria, 1990–2023 (Source: Austrian Environmental Agency – Umweltbundesamt: Preliminary results from NowCast 2024 and own drawing)

Example: Target pathway to climate-neutral transport by 2040 (AT)



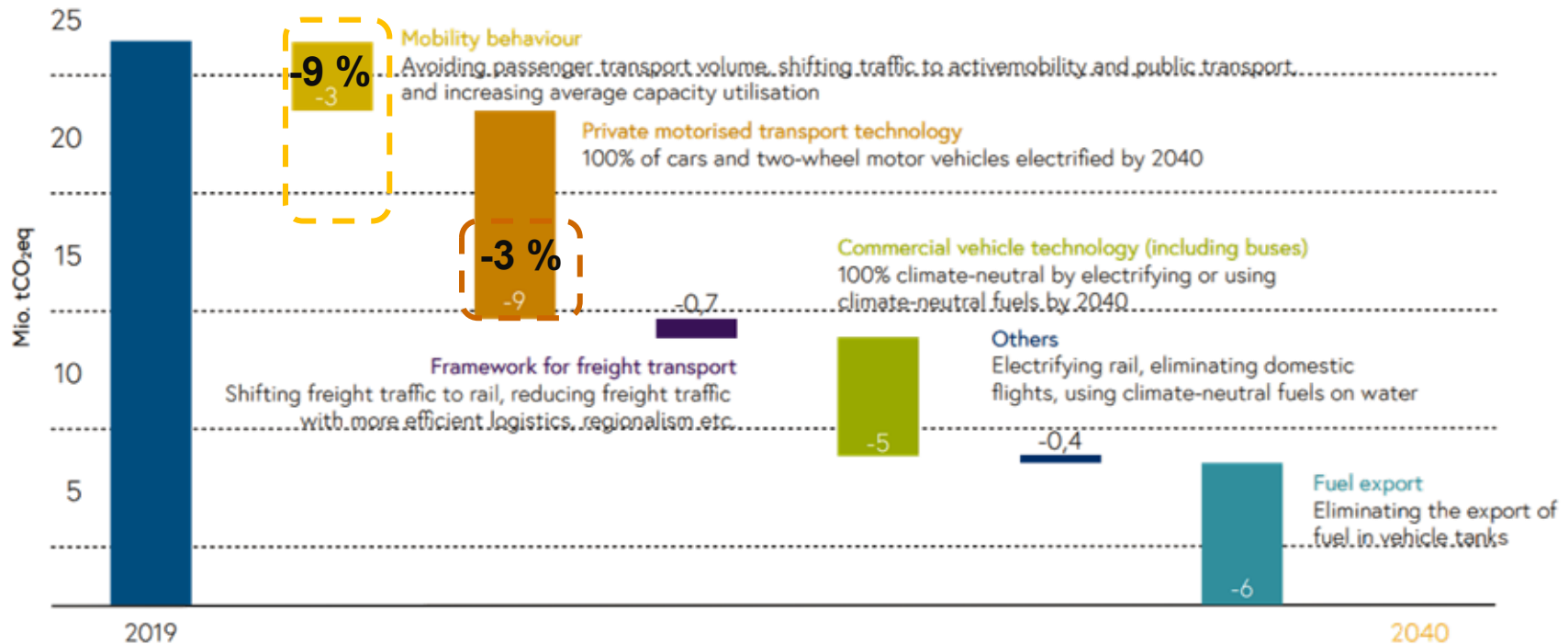
Sources:

2019: Österreichische Luftschadstoffinventur 1995-2019 (Austrian air-pollutant emission inventory), Environment Agency Austria 2021

Zielpfad bis 2040: Klimaneutralität im Verkehr – Transition Mobility 2040 (Pathway to 2040: Climate Neutrality in the Transport Sector – Transition Mobility 2040), Environment Agency Austria 2021

Environment Agency Austria 2021

Example: Target pathway to climate-neutral transport by 2040 (AT)



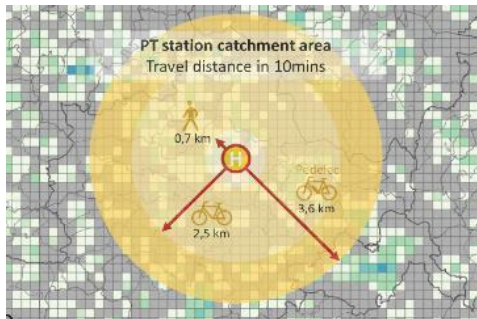
Sources:

2019: Österreichische Luftschadstoffinventur 1995-2019 (Austrian air-pollutant emission inventory), Environment Agency Austria 2021

Zielpfad bis 2040: Klimaneutralität im Verkehr – Transition Mobility 2040 (Pathway to 2040: Climate Neutrality in the Transport Sector – Transition Mobility 2040), Environment Agency Austria 2021

Environment Agency Austria 2021

Pyramid of climate-neutral, sustainable mobility



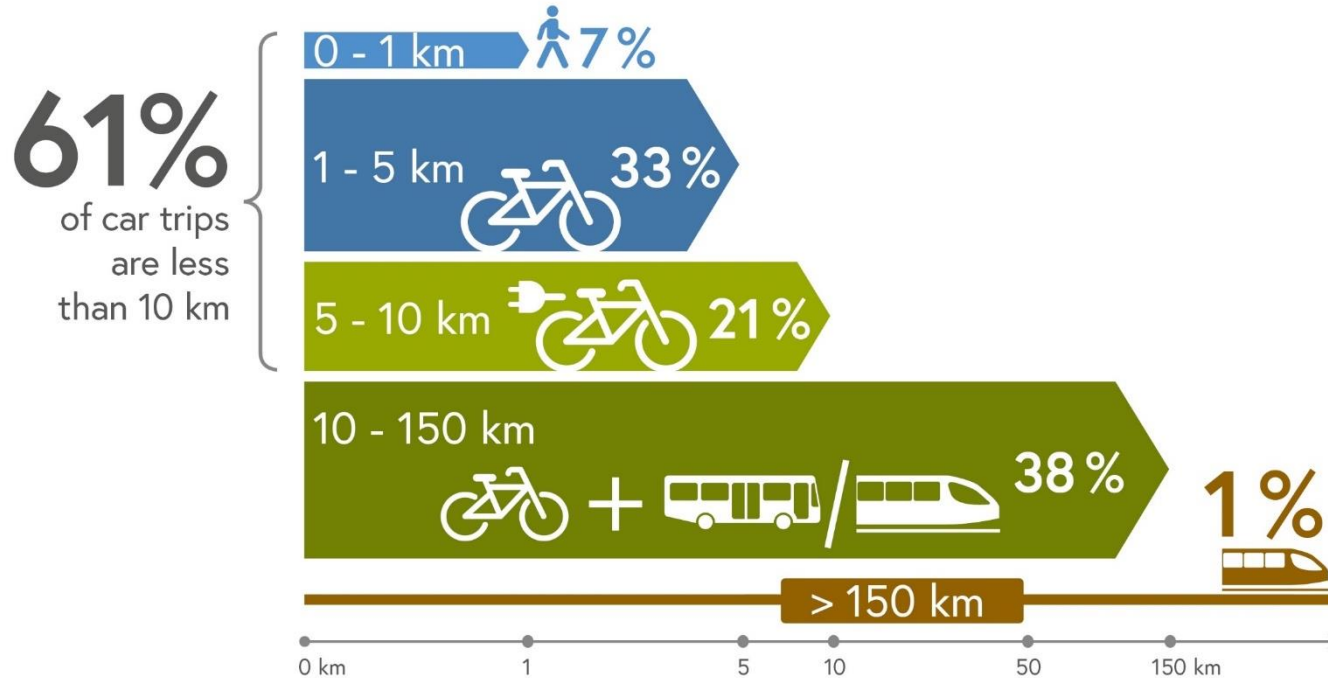
**Infrastructure, Services,
Ticketing & Incentives**
...to change mobility behaviour by
save and attractive **bike parking** and **walkability to
stations**, provide **information** and **capacities** to combined
active to public transport.



Illustration: BMK, 2021

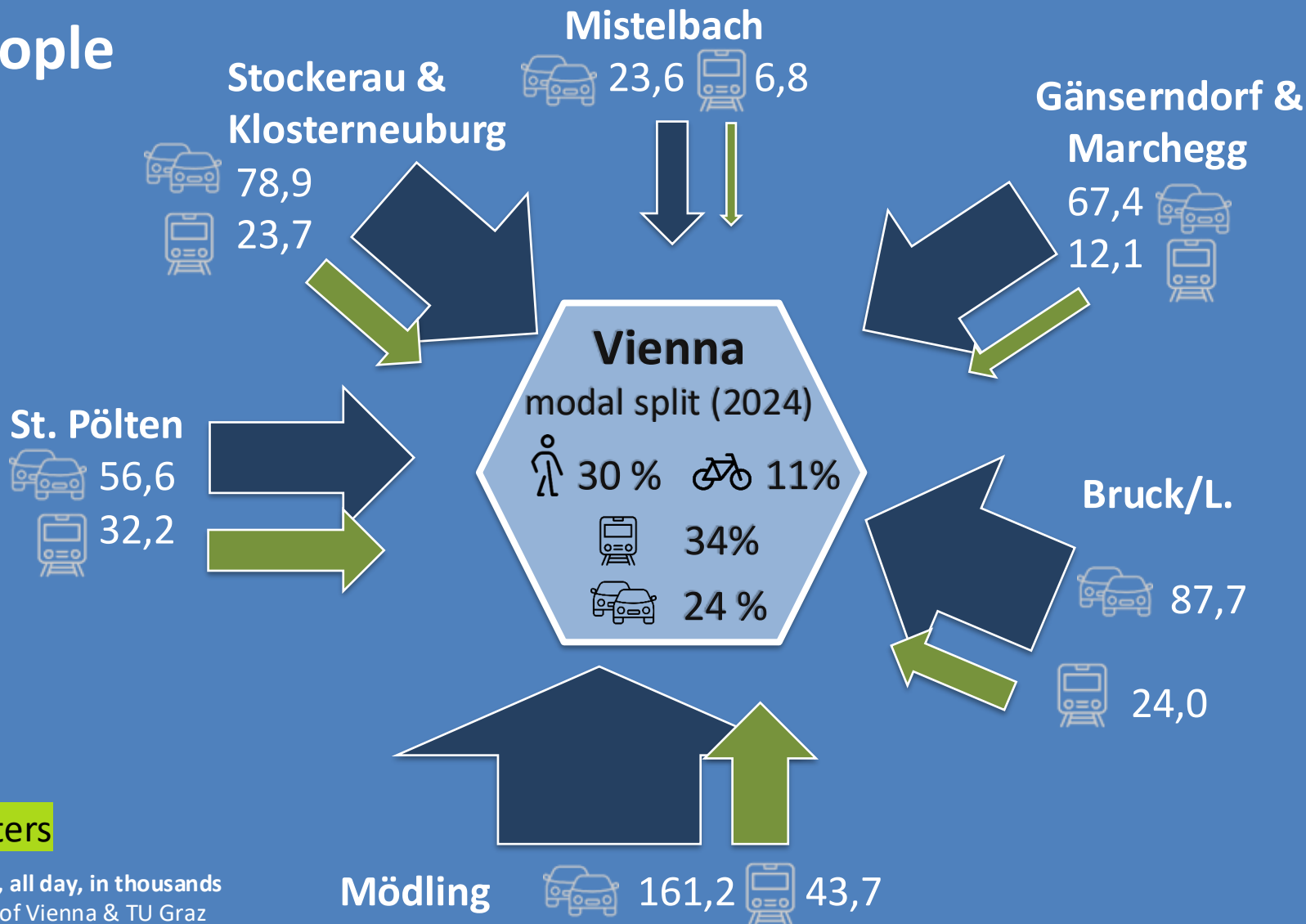


Travel distances



Source: BMK, Österreich unterwegs 2013/2014

617.000 people commuting to Vienna on work days



in thousand commuters

Commuters to Vienna, Tue-Thu, all day, in thousands
Source: Kurier (2024) citing City of Vienna & TU Graz



VISION 2035+: SUSTAINABLE MOBILITY FOR EUROPE ONLY THROUGH CYCLING, WALKING, AND PUBLIC TRANSPORT

CITY

COUNTRYSIDE

LIVABLE CITY CENTER

CLEAN AIR

GOOD CONNECTIONS FOR ALL

REGIONAL TRAIN

ON A FIXED SCHEDULE

CYCLE AND FOOTPATH

ON-DEMAND BUS

MOBILITY HUB

LAST MILE

CYCLE EXPRESSWAYS

ZERO EMISSION

MOBILITY HUB

VILLAGE MOBILITY HUB

LAST MILE

COMPREHENSIVE PUBLIC TRANSPORT

CLEAN AIR

HIGH QUALITY OF LIFE

INTEGRATED TRANSPORT NETWORKS

HEALTHY REGION

Contact

Irene Bittner

Österreichische Energieagentur – Austrian Energy Agency

Website: www.energyagency.at

Project: interreg-danube.eu/projects/active2public-transport

Email: irene.bittner@energyagency.at

[LinkedIn](#) | [Researchgate](#)

